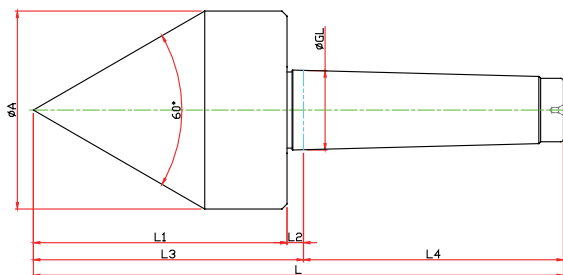


PT-60 TYPE

※ For PIPE machining
 ※ Optimal RPM(below 3,800)



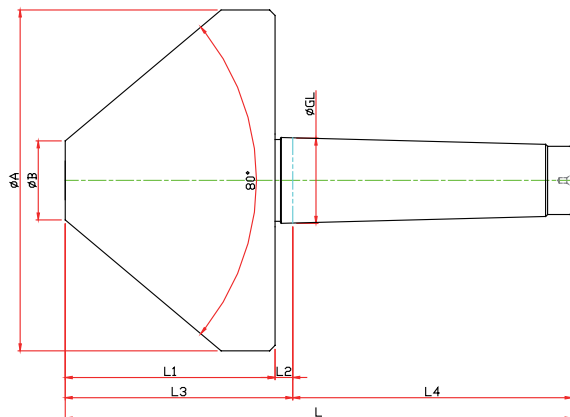
unit:mm/kg

Model	Morse Taper	Dimension							Weight Max. (lbs)	R.P.M Max.	Run out (inch)
		GL	A	L1	L2	L3	L4	L			
LC-2PT-60	NO.2	17.780	44	66	5	71	64	135	154.32	4500	0.00011811
LC-3PT-60	NO.3	23.825	56	78.5	5	83.5	81	164.5	176.37	4500	0.00011811
LC-4PT-60	NO.4	31.267	78	100	6.5	106.5	101.5	208	176.37	4500	0.00011811
LC-5PT-60	NO.5	44.399	98	125	6.5	131.5	129.5	261	507.06	2000	0.00019685
LC-6PT-60	NO.6	63.384	118	154	8	162	182	344	1322.77	1500	0.00019685

※SPECIAL sizes or dimensions are available with quick turnaround

PT-80 TYPE

※ For PIPE machining
 ※ Optimal RPM(below 3,800)



unit:mm/kg

Model	Morse Taper	Dimension								Weight Max. (lbs)	R.P.M Max.	Run out (inch)
		GL	A	B	L1	L2	L3	L4	L			
LC-3PT-80	NO.3	23.825	95	20	66	5	65	81	146	418.88	3800	0.00011811
LC-4PT-80	NO.4	31.267	125	29	77	6.5	83.5	102.5	185	418.88	3800	0.00011811
LC-5PT-80	NO.5	44.399	150	32	90	6.5	96.5	129.5	226	771.62	2000	0.00019685
LC-6PT-80	NO.6	63.384	200	38	120	8	128	182	310	2645.55	1500	0.00019685

※SPECIAL sizes or dimensions are available with quick turnaround